

# DEVELOP YOUR DECISION

National Aeronautics and  
Space Administration



with NASA's Applied Sciences' Capacity Building

## DEVELOP National Program



### WHAT IS DEVELOP?

DEVELOP addresses environmental and public policy issues through interdisciplinary research projects that apply the lens of NASA Earth observations to community concerns around the globe. Bridging the gap between NASA Earth science and society, DEVELOP builds capacity in both participants and partner organizations to better prepare them to address the challenges that face our society and future generations.

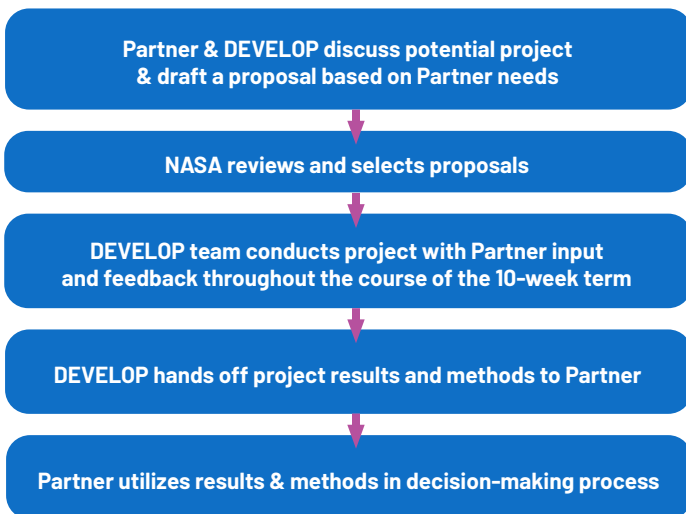
Teams of DEVELOP participants partner with decision makers to conduct rapid feasibility projects that highlight relevant applications of Earth observing missions, cultivate advanced skills, and increase understanding of NASA Earth science data and technology.

### ABOUT PROJECTS

DEVELOP projects apply Earth observations and remote-sensing technology to application areas that highlight NASA Earth observation capabilities relative to environmental issues for enhanced policy and decision making. These areas include:

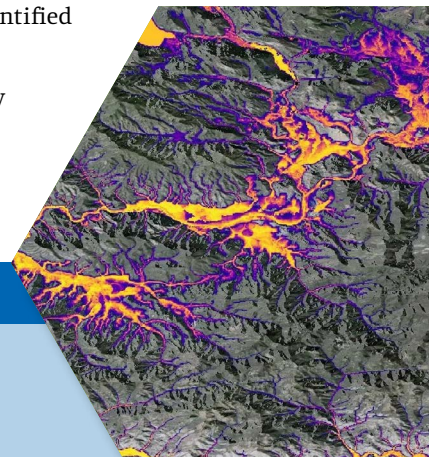


### PROJECT PROCESS:



### BENEFITS OF WORKING WITH DEVELOP:

- » **Build** your organization's capacity to utilize NASA Earth science data and expand the tools and resources available when making decisions.
- » **DEVELOP** teams conduct feasibility projects that identify methods, prepare and analyze preliminary results, and create a set of deliverables (technical paper, poster, presentation).
- » **Partner** organizations are empowered to self-sustainably use Earth observation data through the methods identified by DEVELOP.
- » **Partnering** with DEVELOP may decrease data collection costs, streamline decision making, and fill in data gaps.

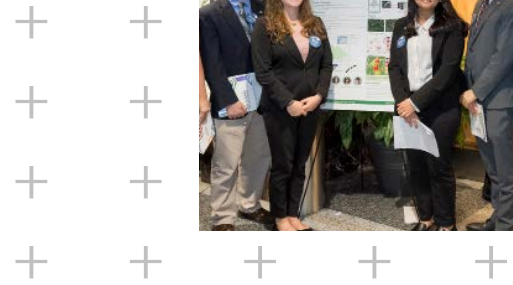


### INTERESTED IN PARTNERING WITH DEVELOP?

Submit a project request online at <https://appliedsciences.nasa.gov/nasadevelop>.

# DEVELOP

## SCIENCE SERVING SOCIETY



Project Example

### Cincinnati & Covington Urban Development II

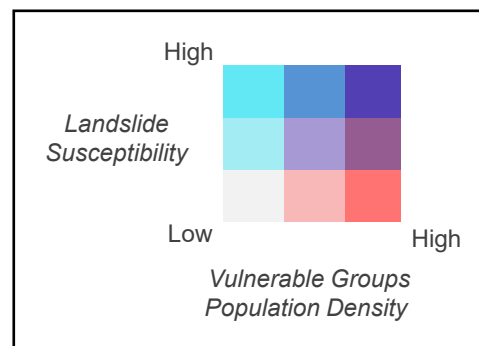
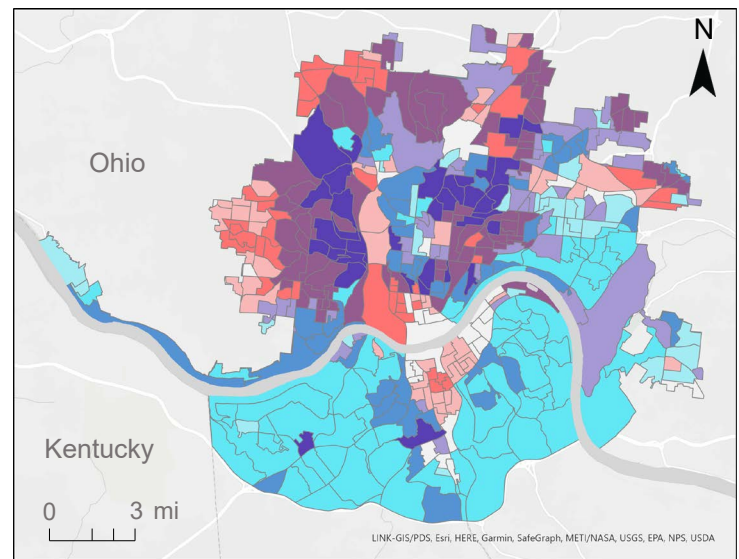
#### Assessing Flooding and Landslide Susceptibility Along the Ohio-Kentucky Border

Landslides and flooding are reoccurring environmental hazards that lead to health risks and economic burdens in the urban areas of Cincinnati, Ohio and Covington, Kentucky. Working with partners from Groundwork USA and Groundwork Ohio River Valley, the NASA DEVELOP team used satellite imagery and ancillary datasets to map landslide susceptibility and exposure, as well as identify pluvial flood vulnerability in the region. The team's refined methodology and hazard analyses provided partners with tools to expand environmental justice awareness and build capacity for city-specific resilience planning.

"NASA DEVELOP helped us translate [landslide and flood susceptibility analyses] to frontline communities facing high climate vulnerability."

--- Sarah Morgan, GIS & Spatial Data Analyst, Groundwork Ohio River Valley

Vulnerable Populations Landslide Susceptibility



### ▶ HOW TO ENGAGE

Project teams at DEVELOP'S locations collaborate with a wide variety of organizations (state and local governments, NGOs, federal agencies, international organizations, etc.) to conduct rapid feasibility projects focused on applying NASA Earth observations to environmental decision-making processes. **Our locations change term to term; Refer to our website for updates.**

DEVELOP is built on strong projects that stem from robust partnerships. The program seeks engaged partners who value scientific collaboration, and most importantly, regular communication during the short 10-week term.

Any organization interested in partnering with DEVELOP can contact the National Program Office and discuss potential project ideas by completing a project request form and submitting it through email. The form can be found online at <https://appliedsciences.nasa.gov/what-we-do/capacity-building/develop/projects>

[www.nasa.gov](http://www.nasa.gov)  
NP-2022-09-046-LaRC

### 2022 LOCATIONS

